

Pressure Gauge for General Purpose/ With Limit Indicator

Series **G36/GA36**

RoHS



G36-10-01

• Be sure to read the precautions on page 739 for selection and mounting.

Standard Specifications

| Model | | G36 | GA36 |
|--------------------------|----------------------------|---|--|
| Type | | Back side thread | Vertical side thread |
| Port size ⁽¹⁾ | | R 1/8 (Option M: With M5 female thread) | R 1/8 |
| Fluid ⁽²⁾ | | Air | |
| Indication precision | | ±3% F.S. (Full span) | |
| Material | Case (Surface treatment) | Rolled steel (Electrodeposition coating black) | Stainless steel (Black melamine painted) |
| | Clear cover ⁽³⁾ | Polycarbonate (Part no.: G36-00-00-4) | Polycarbonate (Part no.: G36-00-00-3) |
| | Stud (Surface treatment) | Aluminum die-casted (Black disulfide molybdenum coat treated) | Brass |
| | Bourdon tube | Brass | |
| Weight (kg) | | 0.04 | 0.05 |

Note 1) When installing a pressure gauge, be careful not to fasten too tight. Excessive tightening will result in damage. Use a pipe tape for sealing. Recommended tightening torque is R 1/8 : Set between 7 to 9 N·m.

Note 2) Not applicable to water as fluid because its stud is made from aluminum die-casted. Water may cause corrosion and block the air passage. Use a pressure gauge with wetted parts made from stainless steel, G46-□-X3. (Note: Take care when using G36-□-01M, whose wetted part is made from brass. Some corrosion may result.) Design system to not be affected by water hammer when using water as fluid. Similarly, when using other fluids, please consult with SMC, to prevent corrosion-related problems.

Note 3) Clear cover: G36-00-00-4 is not compatible with G36-00-00-3.

Model (Standard)

| Model | Pressure range ⁽¹⁾ | Indication unit | Connection thread | Note |
|------------|-------------------------------|-----------------|-------------------|------|
| | MPa | | | |
| G36-2-01 | 0 to 0.2 | MPa | R 1/8 | — |
| G36-4-01 | 0 to 0.4 | | | |
| G36-7-01 | 0 to 0.7 | | | |
| G36-10-01 | 0 to 1.0 | | | |
| GA36-10-01 | 0 to 1.0 | | | |

Note 1) Do not apply pressure more than the maximum display pressure. This will cause a malfunction.

Model (Made to Order)

Other versions of this unit can be made on a Made-to-Order basis. Please consult with SMC for details, as delivery times may be extended.

| Model | Pressure range ⁽¹⁾ | | Indication unit | Connection thread | Note |
|-------------------------------|-------------------------------|----------|-----------------|-------------------|------|
| | MPa | psi | | | |
| G36-P2-01-X30 ⁽²⁾ | 0 to 0.2 | 0 to 30 | MPa, psi | R 1/8 | — |
| G36-P10-01-X30 ⁽²⁾ | 0 to 1.0 | 0 to 150 | | | |
| G36-15-01 | 0 to 1.5 | — | | | |

Note 1) Do not apply pressure more than the maximum display pressure. This will cause a malfunction.

Note 2) Under the New Measurement Law, products for overseas use only (SI unit type for use in Japan).

How to Order

Pressure gauge • **G** **36** - 10 - 01 -

1
2
3
4
5

| | Symbol | Description | 1 | |
|----------|--|---------------------------|--|----------------------|
| | | | Type | |
| | | | G36 | GA36 |
| | | | Back side thread | Vertical side thread |
| 2 | Max. display pressure | + | | |
| | | 2 | 0.2 MPa | ● |
| | | 4 | 0.4 MPa | ● |
| | | 7 | 0.7 MPa | ● |
| | | 10 | 1.0 MPa | ● |
| | | 15 | 1.5 MPa | ● |
| | | P2 ⁽¹⁾ | 0.2 MPa, 30 psi | ○ ⁽²⁾ |
| | | P4 ⁽¹⁾ | 0.4 MPa, 60 psi | ○ ⁽²⁾ |
| | | P7 ⁽¹⁾ | 0.7 MPa, 100 psi | ○ ⁽²⁾ |
| | | P10 ⁽¹⁾ | 1.0 MPa, 150 psi | ○ ⁽²⁾ |
| | | P15 ⁽¹⁾ | 1.5 MPa, 220 psi | ○ ⁽²⁾ |
| 3 | Connection thread | + | | |
| | | 01 | R 1/8 | ● |
| 4 | Option | + | | |
| | | Nil | — | ● |
| | | M ⁽³⁾ | With M5 (Female thread) | ● |
| 5 | Special specification ^{Note 4)} | + | | |
| | | Nil | — | ● |
| | | X2 | Stud parts nickel plated | — |
| | | X4 | Oil-free (Wetted parts degrease washing) | ● |
| | | X30 | Both MPa and psi | ○ ⁽²⁾ |

Note 1) This symbol must be used with Special specification "X30."

Note 2) Under the New Measurement Law, products for overseas use only (SI unit type for use in Japan)

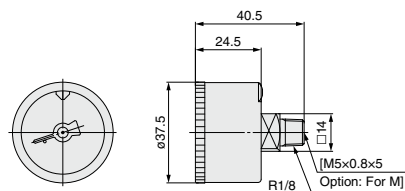
Note 3) To use the pressure gauge with M5 (female thread), attach the joint when piping the tube. For combinations with the special specification products, please consult SMC separately.

Note 4) X3 (Wetted parts stainless steel) specifications are not available.

Note 5) Cover ring assembly is not available.

Dimensions

G36-□□-01(M)



GA36-□□-01

